



PROFESSIONAL SERVICES PROCUREMENT BULLETIN 2010-03 GRAVES COUNTY

COUNTY	Graves
ROUTE	KY 945 & KY 97
DISTRICT	1-Paducah
ITEM NO	A. 1-1058 B. 1-1060
PROJECT DESCRIPTION	A. Replace Bridge and Approaches on KY 945 @ MP 5.024 over Wilson Creek (B187) 0.13 mile south of Wilson Creek Road. Sufficiency Rating - 20.4 B. Replace Bridge and Approaches on KY 97 @ MP 16.617 over Torian Creek (B46) 0.5 mile south of East Tucker Road. Sufficiency Rating - 20.7
PROJECT MANAGER	Timothy B. Choate, PE
USER DIVISION	Division of Highway Design
APPROXIMATE FEE	A. \$140,000.00 B. \$140,000.00
PROJECT FUNDING	BRX
PROJECT LENGTH	Approximately 0.1 miles each
PURPOSE AND NEED	A. The existing bridge on KY 945 over Wilson Creek has a sufficiency rating of 20.4. The bridge is substandard and has a 10-ton posting. The bridge replacement will improve safety and also improve the profile of mainline. B. The existing bridge on KY 97 over Torian Creek has a sufficiency rating of 20.7. The existing bridge has superstructure deficiencies. The replacement of this bridge will improve safety.
DBE REQUIREMENT	None

SCOPE OF WORK

The Selected Consultant will be required to provide engineering services for Phase I Preliminary Engineering to determine the typical section, line and grade, drainage, and preliminary construction cost estimates for replacement of both bridges and their approaches on KY 945 & KY 97.

The Selected Consultant will also be required to provide engineering services to perform Phase II Final Roadway Design; including the preparation of any design studies, drainage design, right-of-way plans, construction plans, traffic control plans, and cost estimates.

The Selected Consultant will also be required to provide engineering services to perform Structure Design.

SPECIAL INSTRUCTIONS

One (1) Consultant will be selected for both Projects A and B.

The Consultant should address an accelerated schedule in the proposal due to low sufficiency rating of the bridges.

The Department may retain any of the services advertised here to perform in-house.

The initial contract agreement will be for Phase I Preliminary Engineering Services and Phase II Final Roadway Design. Structure Design services may be added to the contract agreement by contract modification.

Instructions for Response to Announcement can be found at:

http://transportation.ky.gov/progperform/instructions_for_response_to_kentucky_transportation_cabinet_10-10-08.pdf

AVAILABLE STUDIES	The Selected Consultant shall develop highway plans utilizing the most recent CADD Standards for Highway Plans policy.
AVAILABLE STUDIES	None
PHOTOGRAMMETRIC SERVICES	Photogrammetric services will not be necessary on these projects, due to the project lengths and scopes.
STRUCTURE DESIGN	<p>The Selected Consultant shall provide the necessary engineering services to submit an Advanced Situation Folder(s) to the KYTC for the appropriate applicable structure(s).</p> <p>The Structure Design will be performed by the Consultant. Structure Design services may be added to the contract agreement by contract modification. Prequalification in the area of Structure Design is required to be identified in the Consultant's Response to Announcement.</p>
ENVIRONMENTAL	Consultant shall prepare Corps of Engineers Permits. All other Environmental work shall be done by Department.
GEOTECHNICAL	The Department will supply any Geotechnical Services required for the projects.

UTILITY DESIGN	Not Required.
TRAFFIC	Traffic projections and related information will be provided by the Department.
PREQUALIFICATION REQUIREMENTS	
To respond to this project, the project team must be prequalified in the following areas by the date of this advertisement.	
<u>ROADWAY DESIGN</u>	<ul style="list-style-type: none"> • Rural Roadway Design >\$250,000 • Surveying
<u>STRUCTURE DESIGN</u>	<ul style="list-style-type: none"> • Spans under 500 feet
PROJECT SCHEDULE & MILESTONES	
The selected consultant is expected to meet the scheduled milestone dates Project schedule dates are the same for both projects A and B.	
RESPONSE DATE	October 14, 2009 4:30 p.m. E.S.T. (Frankfort time)
SELECTION COMMITTEE MEETING	October 28, 2009
PRE-DESIGN CONFERENCE	November 11, 2009
TENTATIVE DEADLINE FOR CONSULTANT FEE PROPOSAL	December 2, 2009
CONTRACT NEGOTIATIONS	December 9, 2009
NOTICE TO PROCEED	January 13, 2009
PRELIMINARY LINE AND GRADE INSPECTION	April 1, 2011
JOINT INSPECTION	December 1, 2011
RIGHT-OF-WAY UTILITY PLANS	April 1, 2012
FINAL PLANS	April 1, 2013

EVALUATION FACTORS

1. Relative experience of Consultant personnel assigned to project team with highway projects for KYTC and/or for federal, local, or other state governmental agencies. (10 points)
2. Capacity to comply with project schedule. (10 points)
3. Past record of performance on project of similar type and complexity. (10 points)
4. Project approach and proposed procedures to accomplish the services for the project. (10 points)
5. Consultant's Kentucky office where work is to be performed. (2 points)

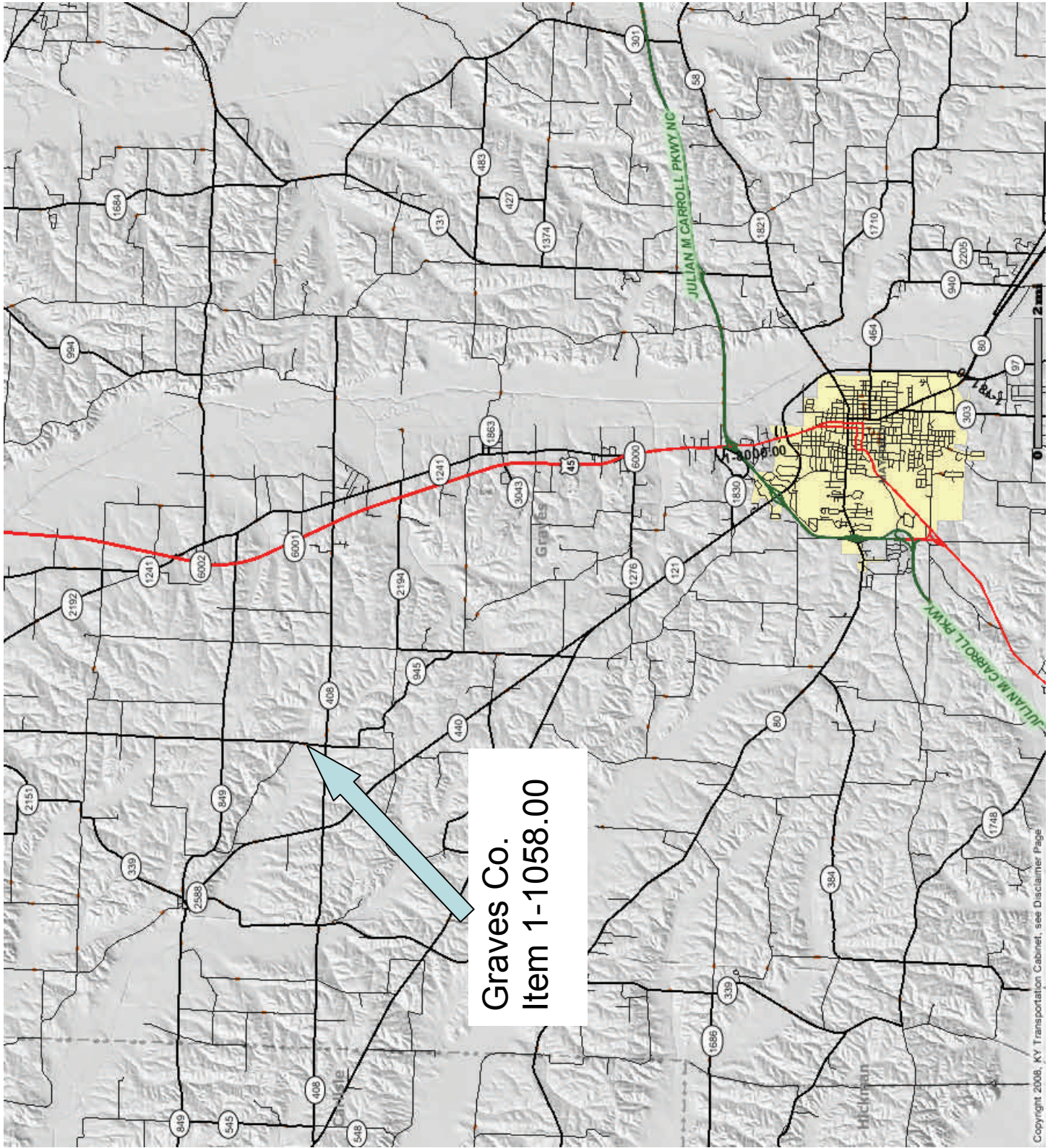
75%-100% of work accomplished in Kentucky offices (2 points)

26%-74% of work accomplished in Kentucky offices (1 point)

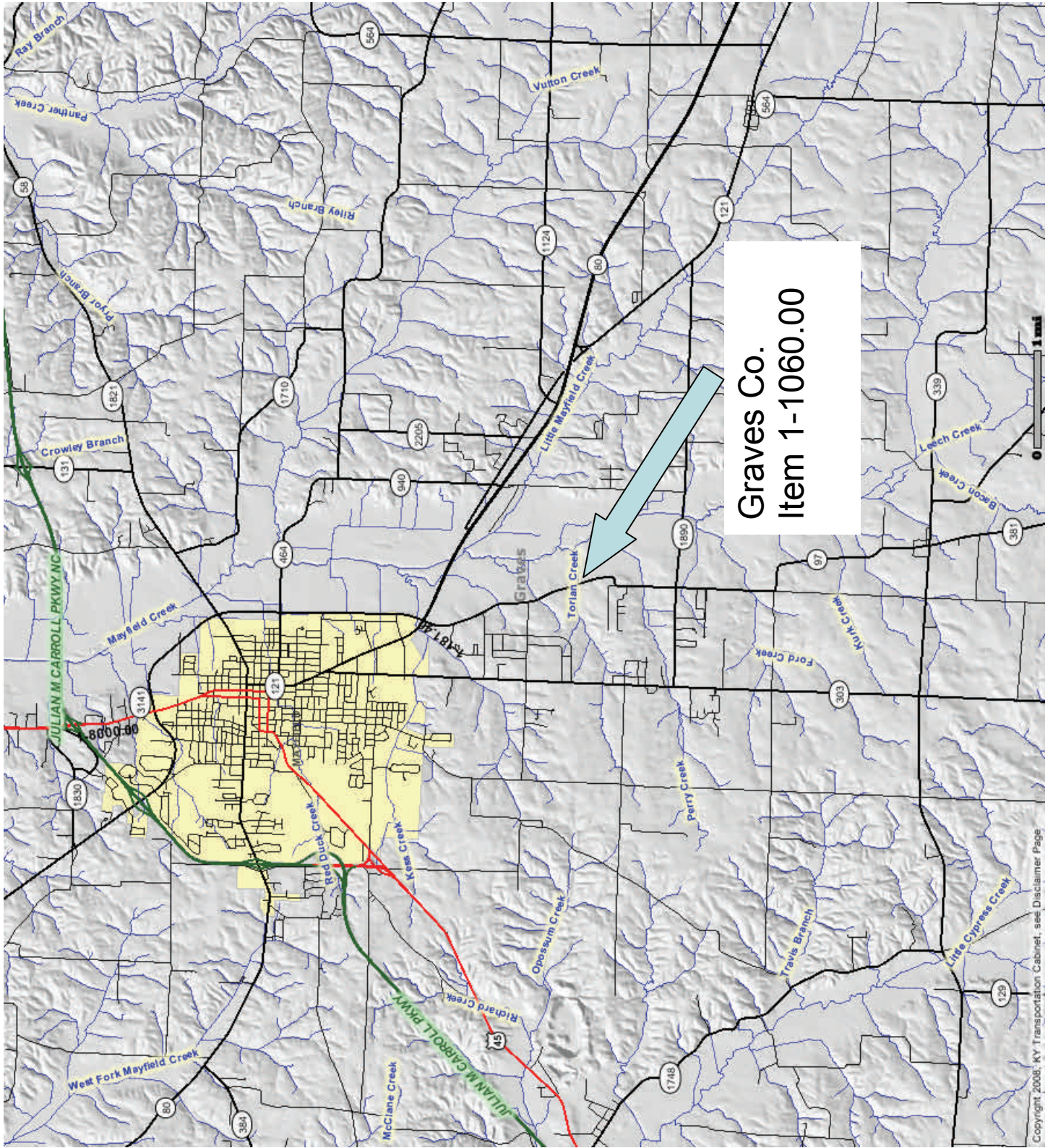
0%-25% of work accomplished in Kentucky offices (0 points)

SELECTION COMMITTEE MEMBERS

1. Timothy Choate, PE, User Division
2. David Martin, PE, User Division
3. David Quarles, PE, Secretary's Pool
4. Gary Valentine, PE, Secretary's Pool
5. James Shipp, PE, Governor's Pool



Graves Co.
Item 1-1058.00



Graves Co.
Item 1-1060.00

Copyright 2008, KY Transportation Cabinet, see Disclaimer Page